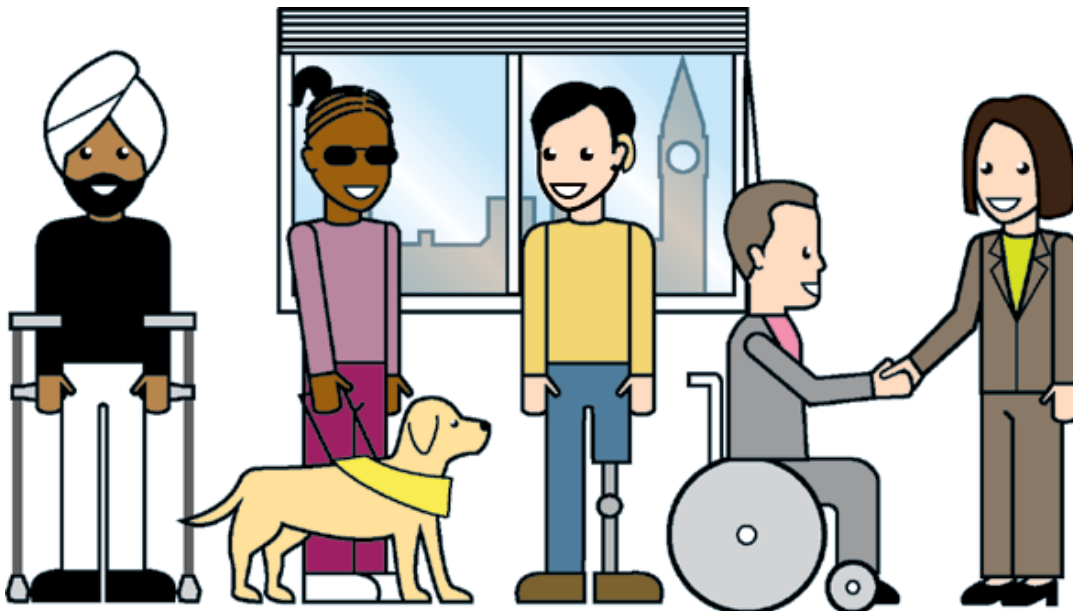




AN INVITATION

Get involved in a new Government disability strategy called 'Fulfilling Potential'



The Government is asking a lot of questions.

True False



KDC has been asked to get your answers.



To do this, we are holding a special event.

PLEASE JOIN IN

COME ALONG TO



Kirkby Leisure Centre, Cherryfield Drive, Kirkby L32 8SJ



on Wednesday 29 February 2012



starting at 10 O'clock and finishing at 3 O'clock



Lunch and refreshments will be provided and there will be lots of different activities to help people get involved and have their say.



We will send a report of our event to the Government. They will look at everyone's suggestions and work with disabled people to publish a new strategy in spring next year.



If you would like to attend please contact **Johanne Ross** on **480 4090**

Johanne will help organise any help you might need, including transport to and from the venue.



If you want to find out more visit

www.odi.gov.uk/fulfillingpotential